

Welcome to Ramky Group



 <p style="color: #ff0000; font-weight: bold; text-align: center;"> Ramky Infrastructure Ltd. (RIL) </p> <ul style="list-style-type: none"> • Construction and Development of Civil Infrastructure 	 <p style="color: #ff0000; font-weight: bold; text-align: center;"> Ramky Enviro Engineers Ltd. (REEL) </p> <ul style="list-style-type: none"> • Waste Management, Recycling and Integrated Environmental Services 	 <p style="color: #ff0000; font-weight: bold; text-align: center;"> Ramky Estates and Farms Ltd. (REFL) </p> <ul style="list-style-type: none"> • Residential, Commercial Institutional and Integrated Townships including Asset Ownership 	 <p style="color: #ff0000; font-weight: bold; text-align: center;"> Ramky Finance & Investments Ltd.(RFIL) </p> <ul style="list-style-type: none"> • Nurturing and Supporting Entrepreneurs <ul style="list-style-type: none"> — Life Sciences — Education, Construction — Consultancy & ...
---	---	--	---

ENVIRONMENTAL - WASTE MANAGEMENT

REGIONAL LEADER IN ENVIRONMENTAL & WASTE MANAGEMENT

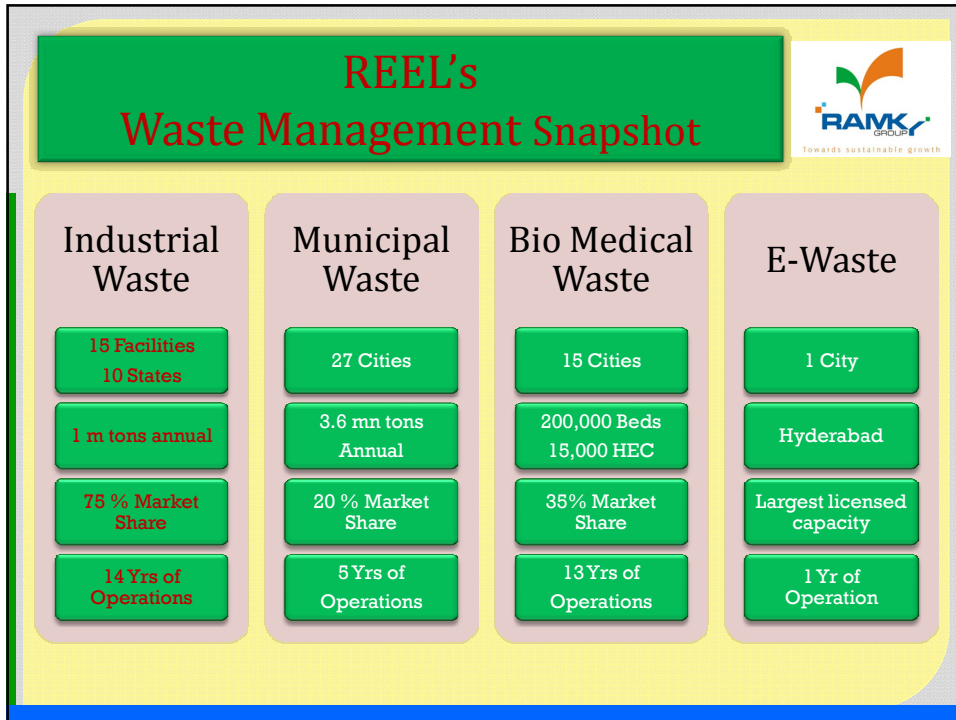
- **30** Municipal Waste Facilities / Projects
- Operates in **10** States in India, handling **4.5 Million** tons of waste annually
- Integrated with E-waste Recycling & Materials Resource Recovery Facilities
- State-of-art Proprietary Pneumatic Waste Collection System
- US EPA Norm for Landfill Construction

- Pioneer & Leader in the India
- Presence in **10** states in India.
- **First** HWM Facility in India in 1998
- Own / Operate more than **15** HWM Facilities
- Manage more than **1 Million Tons** of Hazardous Wastes (60% Haz waste of India)
- Support around **10,000 Industries**
- **75%** market share by volume & geographical






- India's **First** Medical Waste Facility in 1999
- Own & operate **15** fully compliance medical waste facilities, **125** waste collection vehicles
- Provide medical waste disposal services to over **20,000** Health Care Establishments in 14 cities of India
- Supports **200,000** hospital beds
- Certified to ISO 9000, ISO 14001, OSHA 18000

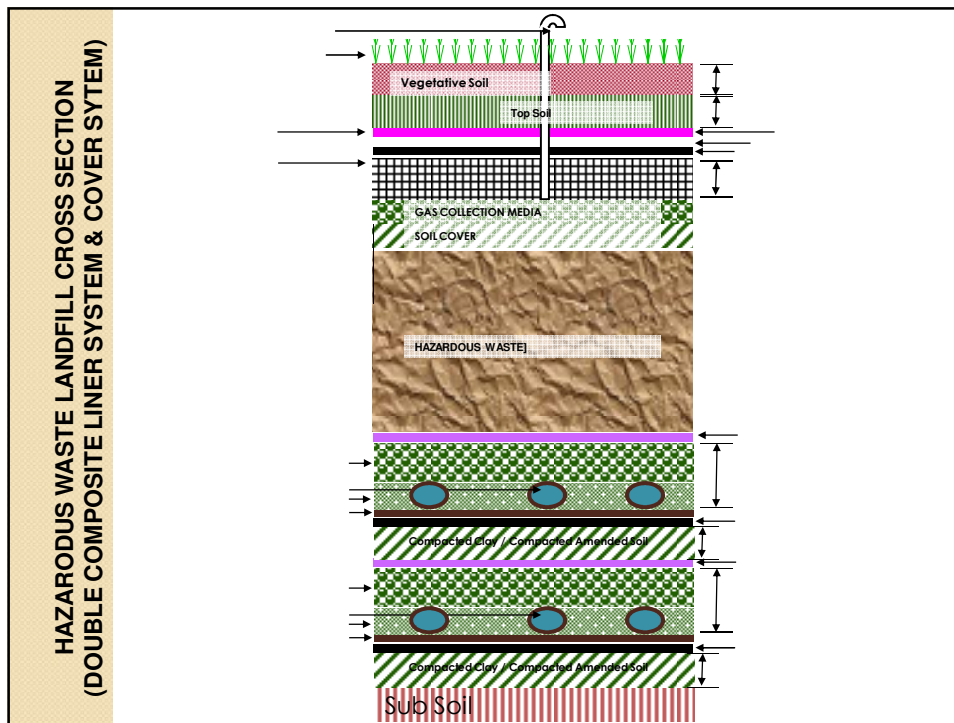


TNWML REGULAR ACTIVITIES

- **COLLECTION & TRANSPORTATION**
- **TREATMENT**
- **STORAGE**
- **DISPOSAL OF HAZARDOUS WASTE**
 - Land Fill
 - Incinerator

View of Engineered Landfill for Disposal of Industrial Waste





Stages of Landfill constructions

- Leveling of sub soil
- Secondary Clay Liner
- Laying of HDPE Sheet
- Laying of Geotextile sheet
- Leachate collection pipeline and filtermedia
- Laying of Geotextile
- GCL Laying at Slopes
- Primary Layer Clay liner
- Laying of HDPE Sheet
- Laying of Geotextile
- Leachate Collection Pipeline and filtermedia
- Laying of Geotextile
- Waste Dumping

Secondary Clay Liner



Cleaning at Clay



Final leveling of Secondary Liner



Testing of Clay Liner



Testing of Clay Liner



Laying HDPE Liner



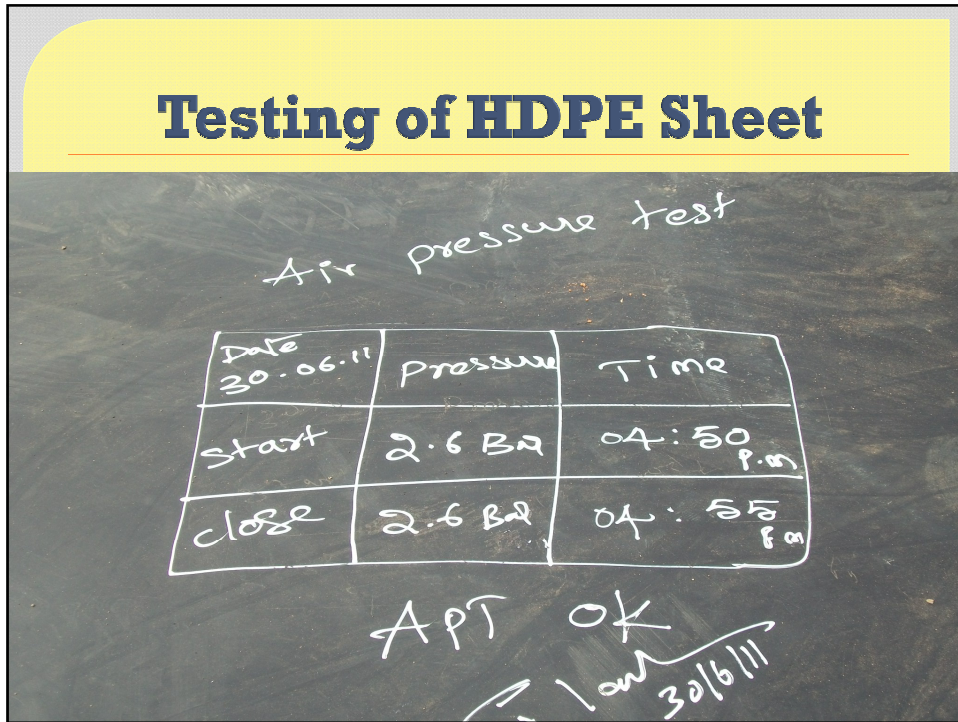
Wedge Welding of HDPE Sheet



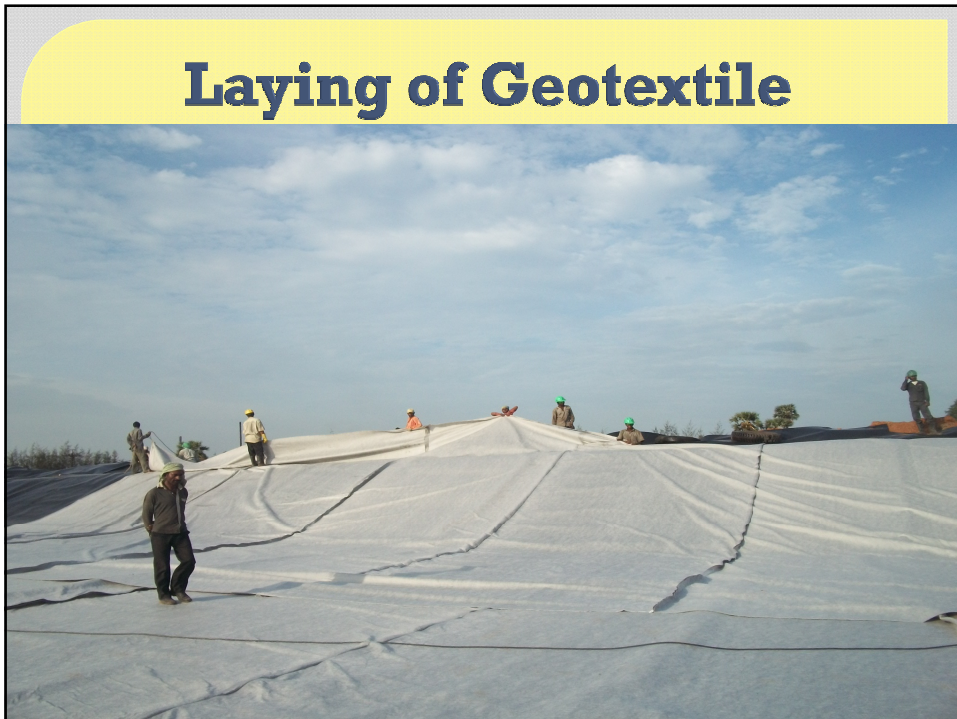
Testing of HDPE Sheet



Testing of HDPE Sheet



Laying of Geotextile



Stitching of Geotextile



Spreading of Filtermedia



Geotextile on filtermedia



Secondary Leachate Pipeline



Laying GCL at slopes after Geotextile



Spreading of Primary Clay Liner



Primary layer filtermedia



Completion of filtermedia



LandFill Status



Cell - 2 Capping : Clay Layer Levelling



Cell-2 Capping : Compaction



Cell 1 & 2 Capping : HDPE Liner



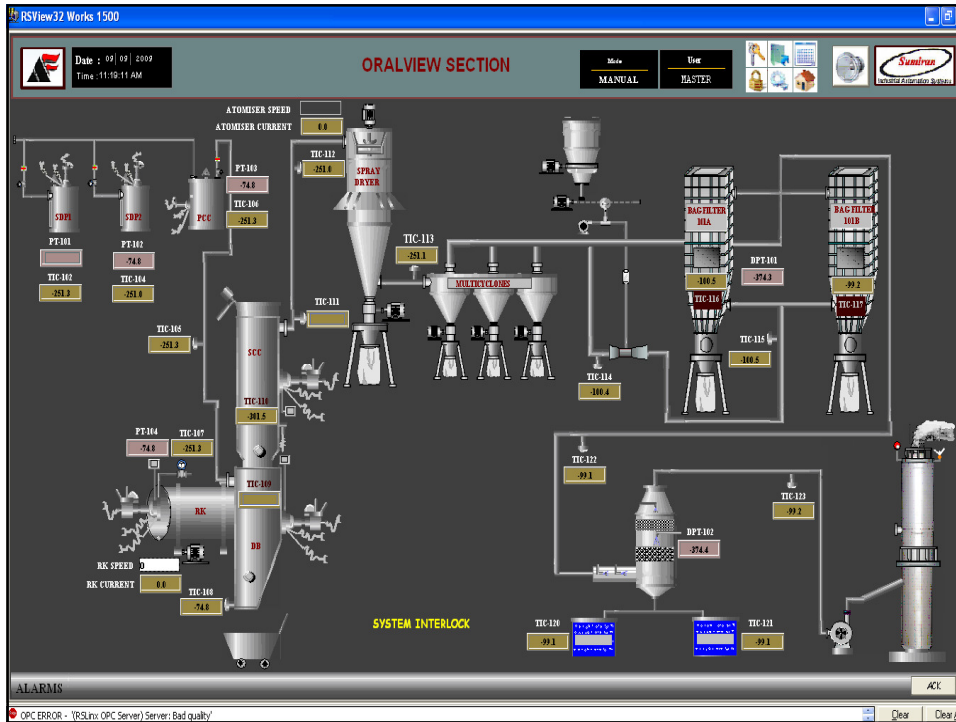
Landfill Area Specifications

- Total land allocated for TSDF at Goommidipoondi SIPCOT Area : 67 acres
- Total Land approved for current Operation 27 Acres
-
- Current Total Landfill Working Area for 10 acres
 - Filled and Operational Area= 5.8 acres
 - Area to be extended= 4.2 acres

Further Expansion of TSDF land area for approval: 40 Acres.

View of Incinerator of TNWML





ENVIRONMENTAL LABORATORY

- ❖ Laboratory Accredited by NABL (ISO/IEC: 17025)
- ❖ Laboratory is having sophisticated Instruments like GC-MS, AAS, CHNS, Bomb Calorimeter and UV-VIS Spectrophotometer
- ❖ Laboratory is capable to do the commercial analysis for industries Like Effluent analysis, water analysis soil analysis ,Hazardous waste analysis AAQ monitoring and Stack monitoring analysis.



Procedure for Disposal of Hazardous waste in TNWML

- ◉ First step industry has to get the IWMA membership
- ◉ Sample has to be submitted to TNWML for comprehensive analysis
- ◉ TNWML will provide complete report of hazardous waste along with suitable disposal method
- ◉ Industry has to enter in to Agreement with TNWML
- ◉ Industry has to submit all the above documents to TNPCB for Authorization.
- ◉ After getting the authorization from TNPCB, the copy has to submit to TNWML.
- ◉ Based on the authorization TNWML will lift the waste from Industry for Disposal.

TSDF Performance Monitoring

- ◉ **IWMA**
- ◉ **TNPCB**
- ◉ **CPCB**
- ◉ **Third Party- IIT Madras, ISO Systems**
- ◉ **And, Self**

Glimpses of Visitors at TNWML

TSDF - Gummidipoondi

Honorable Environment Minister, TN



**Secretary Environment ,TN
MS and ACEE, TNPCB**



Industry Members Visit



Proposed Project



- ▶ **Integrated Common Hazardous Waste Treatment, Storage and Recycling Facilities**
 - ▶ at
 - ▶ **Undurumikidakkulam, Thiruchuli Taluk,**
 - ▶ **Virudhunagar District, Tamil Nadu**
- ▶ **Project Proponent**
 - ▶ **Tamil Nadu Waste Management Limited**
 - ▶ **RAMKY GROUP COMPANY**

New Project Brief

Project Activity	Common hazardous waste treatment, storage and disposal facilities (TSDFs).			
Project Capacity	Phase I	Hazardous Waste	Secured Landfill	150000 TPA
			Direct landfill	60000 TPA
			Stabilized material land filling	90000 TPA
		Bio Medical Waste	(30000 Beds app.)	1 TPD
		E-waste		30000 TPA
		Phase II	Recycling Facility	Spent Solvent Recycling
	Used Oil Recycling			10000 KL
	Waste Paper Recycling			10000 TPA
	Waste Plastic Recycling			10000 TPA
	Used Lead Acid Batteries			24000 TPA
	Alternative fuel & Raw Material Facility		10000 TPA	
	Phase III	Incinerator		20000 TPA
		Renewable Energy		2 MW
			Waste to Energy	
Cost of the project	RS 270 Crores			

